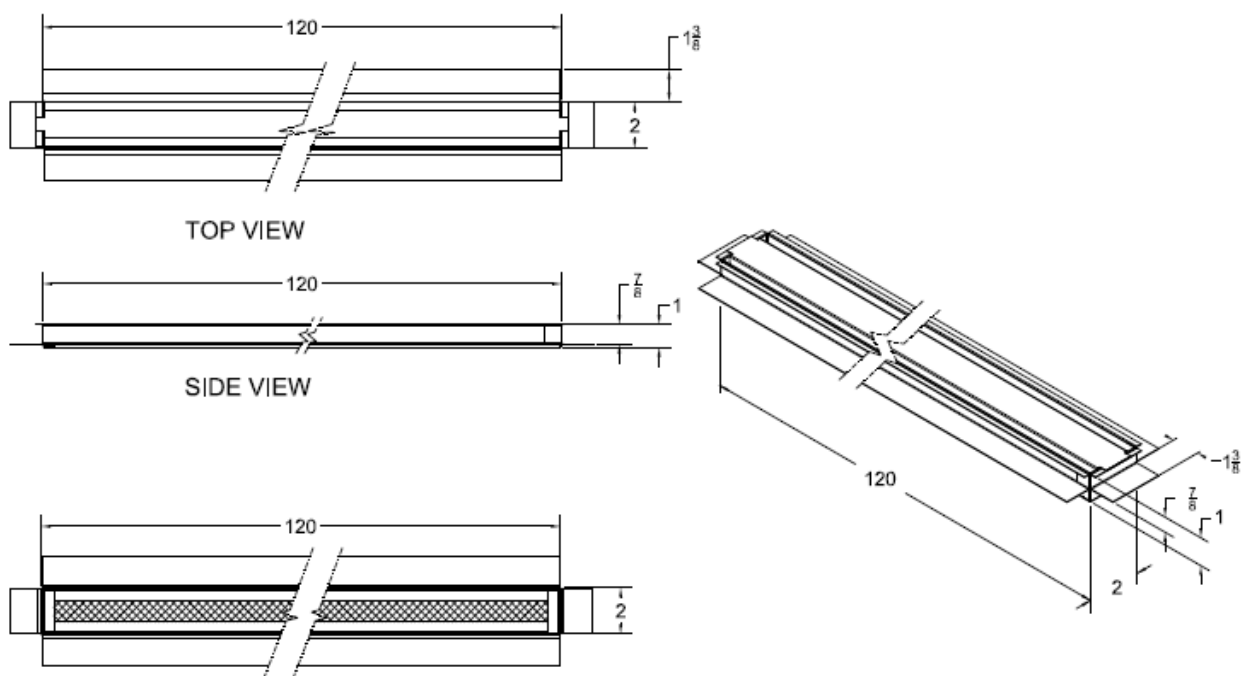


## PRODUCT SPEC SHEET/KEY SPECIFICATIONS

### CONTINUOUS UNDER EAVE/SOFFIT VENTS Model # CS2031-PG



| Under Eave/Soffit Vents | Model     | Size L x W | NFVA Provided | Flanges available | Flange Definition | Weight |
|-------------------------|-----------|------------|---------------|-------------------|-------------------|--------|
|                         | CS2031-PG | 120" x 2"  | 120           | Plaster Ground    | 7/8" Setback      | 15lbs  |
| CUSTOM SIZES AVAILABLE  |           |            |               |                   |                   |        |

### BENEFITS:

- Safety vents that are used in areas prone to wildfires, wind driven rain, or wind driven snow.
- Overlapping Baffle Protection ( Patent Pending )
  - Air Flow through normally
  - Resists the intrusion of Flame and Embers, Wind Driven Rain and Wind Driven Snow
- Compliant with new California Ch7a Building Code
- 20 year Warranty

### STANDARD MATERIALS

**1/8" mesh standard unless otherwise requested**

Astm A653/A653M- G90 hot dipped galvanized steel, 26GA

ASTM D9092- mill phosphatized coating for painting.- If bonderized

ASTM b370- Sheet Copper, 16oz and 20oz- if copper

**Installation:** Install like any other similar Ventilator Product on the market.

**WARNING:** Do NOT cut product prior to installation. This will void all warranties. If smaller lengths are needed, please measure and order custom lengths prior to installation.