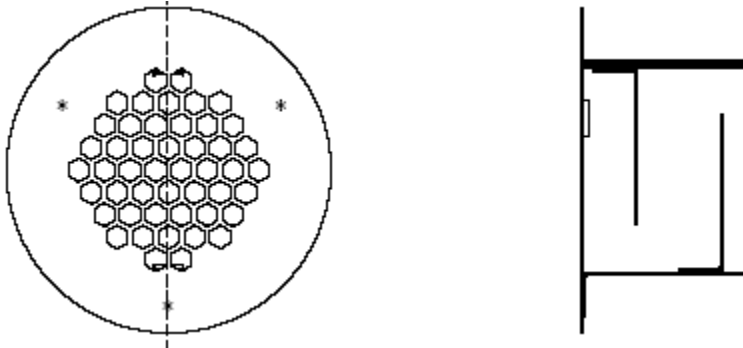


# PRODUCT SPEC SHEET/KEY SPECIFICATIONS

## FIREPLUG UNDEREAVE BLOCK HOLE Model # FP2031



Under Eave/Soffit Vents	Model	Size L x W	NFVA Provided	Flanges available	Flange Definition	Weight
	FP2031	4" insert	3	.5" Flange All the way around	FRONT	1.5lb
CUSTOM SIZES AND MATERIALS AVAILABLE						

### BENEFITS:

- Safety vents that are used in areas prone to wildfires
- Overlapping Baffle Protection ( Patent Pending )
  - Air Flow through normally
- Resists the intrusion of Flame and Embers
- Compliant with new California Ch7a Building Code
- 20 Year Warranty
- Easy Install

**STANDARD MATERIALS**  
G90 ZINC PLATED steel, 26GA

**Installation:** See website: [www.brandguardvents.com](http://www.brandguardvents.com) for installation instructions  
Product is intended to be used only under a protective soffit/undereave overhang inserted into 2x blocking/frieze block. It is not intended to be used on a sidewall without a protective soffit/undereave overhang.